



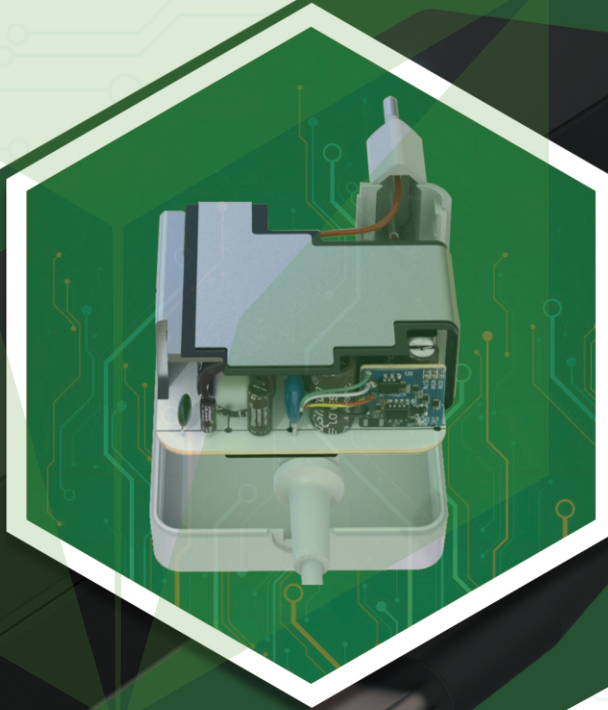
# THIRD TREE

## Stay Power

Ac Adapter

Manufacturer focusing on AC Power Adapters

Experiences of focusing on AC Adapter since 2013





**THIRD TREE**

**CERTIFICATES** ————— 01-01

**COLLECTIONS** ————— 02-07

**MORE DETAILS** ————— 08-16

**ABOUT US** ————— 17-17

# CERTIFICATES



# PRODUCT COLLECTIONS



Slim Universal

140W

L

T

Universal Series  
AC Adapter

Apple Series  
Macbook Adapter

240W Series

65/90W Series

45W Series

Apple Series  
Laptop Adapter

130W Series



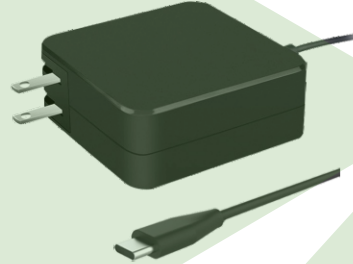
## 45W USB-C Wall Type Power Adapter



**Model:**AF45200CUSB  
**Input:**100-240V AC(50-60HZ)  
**Output:**5V/3A 9V/3A 12V/3A  
15V/2.5A 18V/2.25A 20V/2.25A  
PD Type C  
**Dimension:**88\*88\*27mm(L\*W\*H)



## 65W USB-C Wall Type Power Adapter



**Model:**AF65200CUSB  
**Input:**100-240V AC(50-60HZ)  
**Output:**5V/3A 9V/3A 12V/3A  
15V/3A 20V/3.25A PD Type C  
**Dimension:**88\*88\*27mm(L\*W\*H)



## 35W Fast Charger USB-C and USB-A port



**Model:**GS-W35A0966  
**Input:**100-240V 50-60HZ 1.0A  
**USB-C:**5V-3A 9V-3A 12V-2.92A 15V-2.33A  
20V-1.75A 35W(PPS)3.3V/11V-3A  
**USB-A:**5V-3A 9V-2A 12V-1.5A  
**Colors:**White/Black



## 84W E-Scooter Charger



**Model:**ES8442SP  
**Input:**100-240V AC(50-60HZ)  
**Output:**42V/2A Special  
**Dimension:**140\*60\*35mm(L\*W\*H)



## 140W PD3.1 USB-C Power Adapter



**Model:**AE140200CUSB  
**Input:**100-240V AC(50-60HZ)  
**Output:**5V3A 9V3A 12V3A 15V3A  
20V5A EPR:28V5A  
PD Type C- Magsafe 3  
**Dimension:**98\*80\*32mm(L\*W\*H)



## 90W Slim Universal AC Adapter



**Model:**UA65S  
**Input:**100-240V AC(50-60HZ)  
**Output:**15V/16V/18.5V/19V  
19.5V/20V(90W Max) 8 tips  
**Dimension:**110\*66\*19mm(L\*W\*H)



## 45W Power Adapter Magsafe 2 for Macbook



**Model:**AE60165M1L  
**Input:**100-240V AC(50-60HZ)  
**Output:**16.5V/3.65A L  
**Dimension:**76\*76\*30mm(L\*W\*H)



**Model:**AE451485M2  
**Input:**100-240V AC(50-60HZ)  
**Output:**14.85V/3.05A T  
**Dimension:**65\*65\*30mm(L\*W\*H)





## 45W Desktop Type AC Power Adapter



**Model:**H451954530  
**Input:**100-240V AC(50-60HZ)  
**Output:**19V/2.31A 4.5\*3.0mm  
**Dimension:**90\*37\*25mm(L\*W\*H)



## 65W/90W Desktop Type AC power Adapter



**Model:**TA651905525/TA901905525  
**Input:**100-240V AC(50-60HZ)  
**65W Output:**19V/3.42A 5.5\*2.5mm  
**90W Output:**19V/4.74A 5.5\*2.5mm  
**Dimension:**107\*45\*32mm(L\*W\*H)  
126\*50\*35mm(L\*W\*H)



## 130W Desktop Type PD Type C Power Adapter



**Model:**AF130200CUSB  
**Input:**100-240V AC(50-60HZ)  
**Output:**5V/1A 20V/4.5A 20V/6.5A  
PD Type C  
**Dimension:**169.5\*65\*38.5mm(L\*W\*H)



## 240W Desktop Type Power Adapter



**Model:**DL1801957450  
**Input:**100-240V AC(50-60HZ)  
**Output:**19.5V/9.23A 7.4\*5.0mm  
**Dimension:**170\*85\*42mm(L\*W\*H)

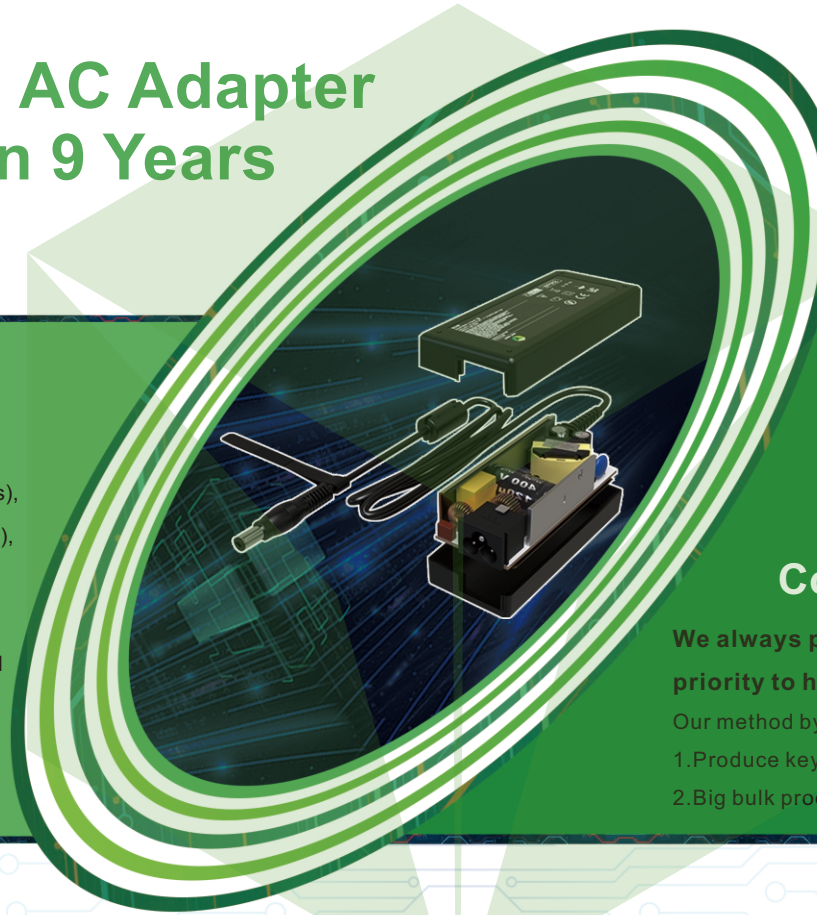


# Focus On AC Adapter More Than 9 Years

## QC System

IQC(3 persons), PQC(18 persons),  
FPC(3 persons), OQC(3 persons),

- 1.Incoming raw material control
- 2.Production quality control
- 3.Finished product quality control
- 4.Before shipment quality control



## Key Components Production

We not only do assembly, but  
also produce key components:

- 1.Transformer
- 2.Inductor
- 3.DC Cable and AC Cable
- 4.Heat sink piece and shielding piece
- 5.Insulation piece (not all listed)

## Cost Control

We always put “save cost price” as our  
priority to help partners to win market.

Our method by:

- 1.Produce key components
- 2.Big bulk production



## Before and After Shipment Sales Services

As a professional factory for laptop adapters, we take very careful steps for our customers, providing a satisfied and strong backup for their sales. Before shipment, we follow up partners' requests and demands; After shipment, we follow up the feedbacks of partners and markets

### R&D Strength

### R&D Strength

Highlight point: except equipped with professional R&D team, we have our own R&D Lab. In our R&D Lab, with our high grade instruments, we could finish many test items of EMC or LVD. We have instruments: Programmable AC source/ Multi-channel temperature indicator/ Flow rate meter of melting materials/ DC power supply/ Digital power meter/ Digital oscilloscope/ Pulling force test machine/ Inductive bias current source/ Drop tester/ Digital electric bridge/ Low temperature tester/ High temperature tester...

# Product Features/Our Advantages

1. Compatible with most e-scooters
2. High-Precision output voltage
3. High efficiency & Multi-Protection
4. Low Ripple wave & Anti-interference
5. High-quality components

## E-Scooter Charger



OCP



OVP



OTP



OPP



AS



SCP

**Input:**

100-240V AC(50-60HZ)

**Maximum Input:**

84W 42V/2A

**Dimension:**

140\*60\*35mm(L\*W\*H)



## Product Features/Our Advantages

- 1.Changeable or unchangeable plug
- 2.High-Precision output voltage
- 3.High efficiency & Multi-Protection
- 4.Low Ripple wave & Anti-interference
- 5.High-quality components



OCP



OVP



OTP



OPP



AS



SCP

**Input:**

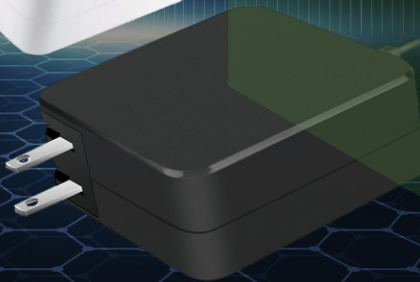
100-240V AC(50-60HZ)

**Power range:**

33W-90W

**Color:**

white/black



## Plug for Options



EU



US



UK



AU



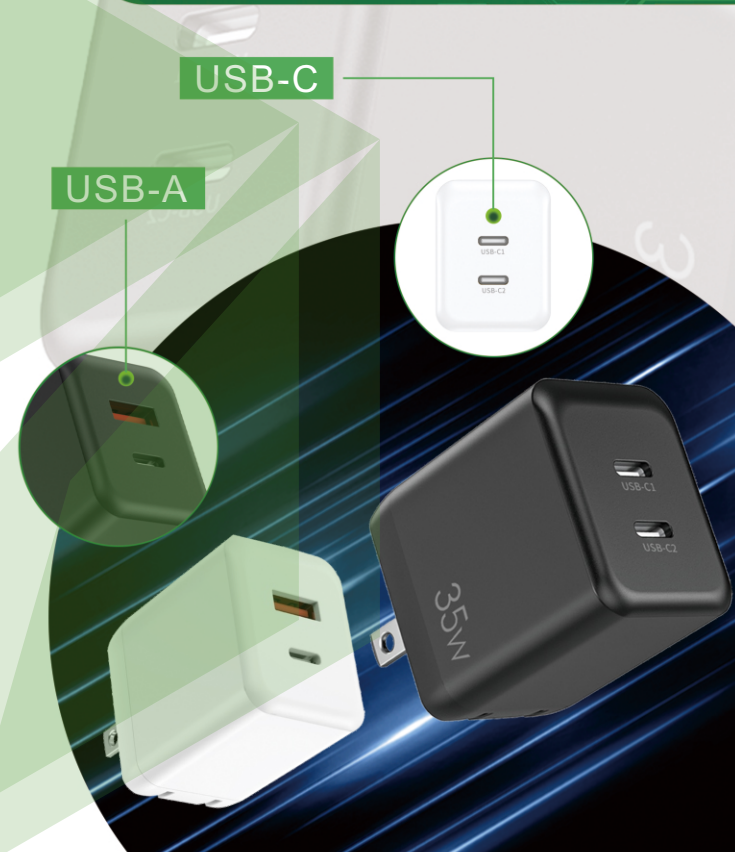
# Product Features/ Our Advantages

- 1.High speed Charging
- 2.With 2 ports: USB-A /USB-C
- 3.With 2 ports: USB-C/USB-C
- 4.Black & White color for choice
- 5.100% compatibility

<b>Input:</b>	100-240V 50/60Hz 1.0A
<b>USB-C</b>	5V-3A 9V-3A 12V-2.92A 15V-2.33A 20V-1.75A 35W(PPS) 3.3V/11V-3A
<b>USB-A</b>	5V-3A 9V-2A 12V-1.5A
<b>Colors:</b>	white/black

<b>Input:</b>	100-240V 50/60Hz 1.0A
<b>USB-C</b>	5V-3A 9V-3A 12V-2.92A 15V-2.33A 20V-1.75A 35WMax (PPS) 3.3V-11V/3A
<b>Colors:</b>	white/black

## 35W Fast Charging



# 140W PD3.1 USB-C Power Adapter

Full charge all you devices



OCP



OVP



OTP



OPP



AS



SCP

<b>Model:</b>	AE140200CUSB
<b>Input:</b>	100-240V AC(50-60HZ)
<b>Output:</b>	5V3A 9V3A 12V3A 15V3A 20V5A EPR:28V5A
<b>Dimension:</b>	98*80*32mm(L*W*H)

## Product Features/Our Advantages

- 1.100% inspection for plug
- 2.Higher over current point,better protection
- 3.Upgrade to PD3.1 for charging more devices
- 4.Use flat inductor,better filtering performance
- 5.Better work craft, smaller cracks of case
- 6.Better case color,closest to original one
- 7.Add protocol, to avoid the spark fire on dc tip, to protect adapter & Macbook better, and prolong the use life

## Plug for Options



US



EU



UK



AU



# PD USB-C to USB-C cable with e-mark



OCP



OVP



OTP



OPP



AS



SCP

Maximum  
**240W**

<b>Input:</b>	100-240V AC(50-60HZ)
<b>Maximum Input:</b>	240W
<b>Dimension:</b>	2M(L)

## Product Features/ Our Advantages

1. With e-mark, super fast charging
2. Maximum 240W
3. Compatible for all brands
4. With e-mark, super fast charging





# Maximum 360W Big Power AC Adapter

Power rang: 120W-360W



OCP



OVP



OTP



OPP



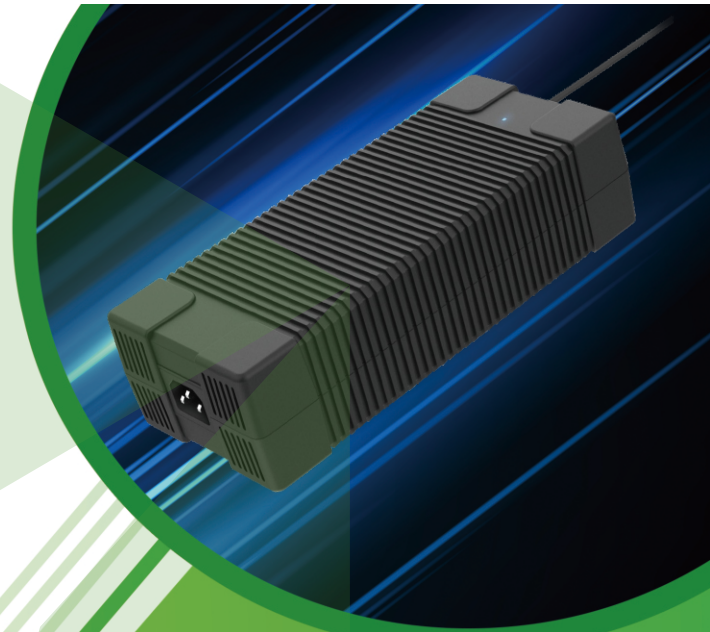
AS



SCP

## Product Features/ Our Advantages

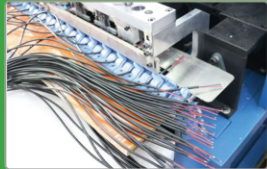
- 1.High-Precision output voltage
- 2.High efficiency & Multi-Protection
- 3.Low Ripple wave & Anti-interference
- 4.High-quality components
- 5.Install 2 IC, without IC unrecognizable problem



- 1.Rigorous QC system from IQC to OQC makes RMA rate less than 1%
- 2.Prices usually 20% lower than our competitors for same products
- 3.Most of our products conform to CE, RoHS, GS, CB,UL,REACH, FCC...



# Cable Production



DC cable and AC cable is important factor to guarantee quality. From wire drawing, wire twist, cover skin of wire, injection of head and tail, etc. all finished by our factory. Furthermore, for cables, we do 100% testing instead of random testing. We standardize cable in factory standard quality by following:



## Factor:

- Inner wire
- Conductor cable
- Insulation thickness
- PVC skin thickness
- OD of finished cable

# Production of Heat Sink Piece and Shielding Piece + Wall type shell/ Desktop shell

Craft we have:

Design, sample processing, mold development, stamping, sandblasting, Brushed oxidation, painting, oil spraying, powder spraying, corrosion, silk screen printing, and etc.

## Factor:

- PC material
- Fire retardant
- Environmental protection



# ABOUT US

Third Tree is a manufacturer specializing in AC adapters with over 9 years experiences.

In 2020, we established industrial park in Sichuan for main production, with headquarter still keeping in Shenzhen. The production area is 25,000 square meters, with 500+ employees, including 20 engineers (8 R&D engineers). Besides, we have 18 production lines, 40 sets of special production equipment sets and monthly production capacity of 1,000,000 pcs.

Professional experiences with over 9 years in AC adapters, which enable us control the AC adapters' quality to our high-level standards. We control the production of AC adapters in a comprehensive system: from the raw materials, production, and finished products.

At present, we sell to the world at least 400,000 adapters monthly. The goal of Third Tree is to provide excellent services of OEM/ODM and other commercial projects.



ICT



Aging Test



ATE(Full functional test)

# THIRD TREE

Third Tree Industrial Co.,Ltd.

---



SCAN QR-CODE TO GET MORE INFORMATION

Tel: 86-755-21049970

Email: [info@third-tree.com](mailto:info@third-tree.com)

Web: [www.third-tree.com](http://www.third-tree.com)

Whatsapp: +8618681567870

Office Add: RM322,Gangshen International

Center,Xinniu Road,Longhua District Shenzhen,China